

Mud logging GC

The GC-2560 ML is the one of best choice of gas chromatography that analyses the mud logging gas (C1 to C5) very fast. The major advantage for high quality analyses are the use of advanced GC configuration using tow column and 10 port valve.

**Fast analysis of C1-C5 less than
100 Second**

Altitude compensation system



GC-2560 ML

Performance

High speed, High resolution, High reproducibility, High quality High sensitive FID and stable THC (Optional)

Double split capillary system split only C1 and C2

Accurate and high performance oven with any step temperature programming

Full EPC high resolution gas control for all inlet and detectors

User friendly software with online help in any language

Application

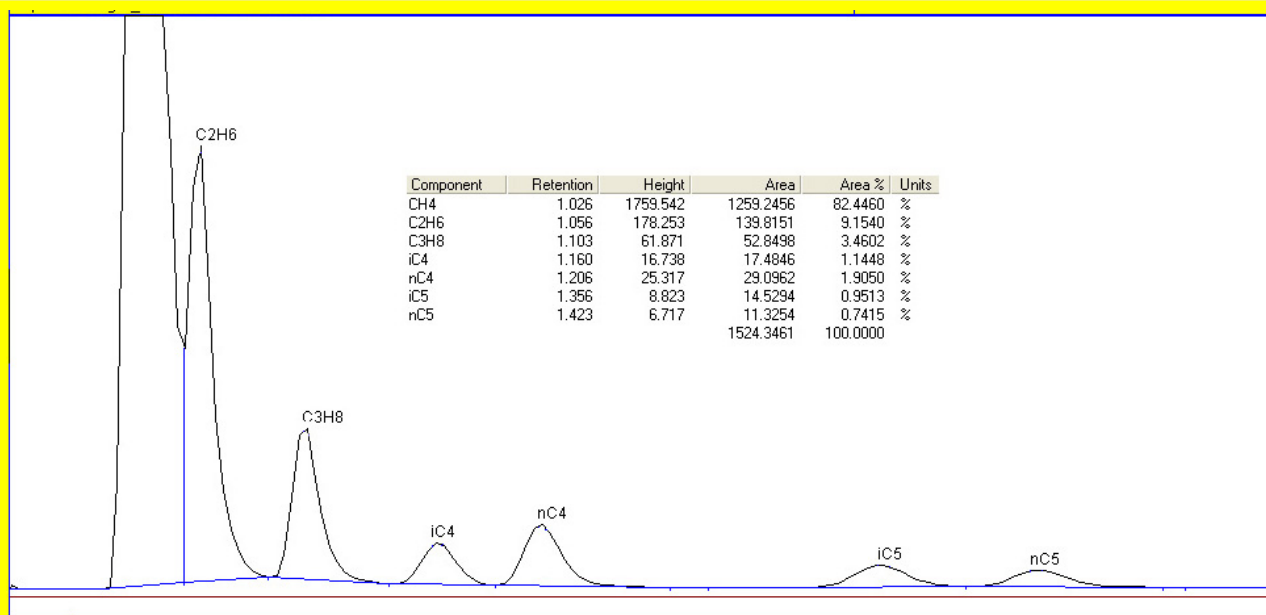
Oil well logging

Low weight hydrocarbon analyses

THC analyses

Field and laboratory instrument

Scientific research



Unit 4, No. 183, Mahtab Bldg.,
Tolid Garan Blvd., KM 19
Jade Ghadim Karaj,
Tehran 3114859018, Iran

Tel: 0098 21 44336672
Fax: 0098 21 46825835
E mail: info@irangc.com
Telegram: @irangc95
Teif Gostar faraz Co. Ltd.



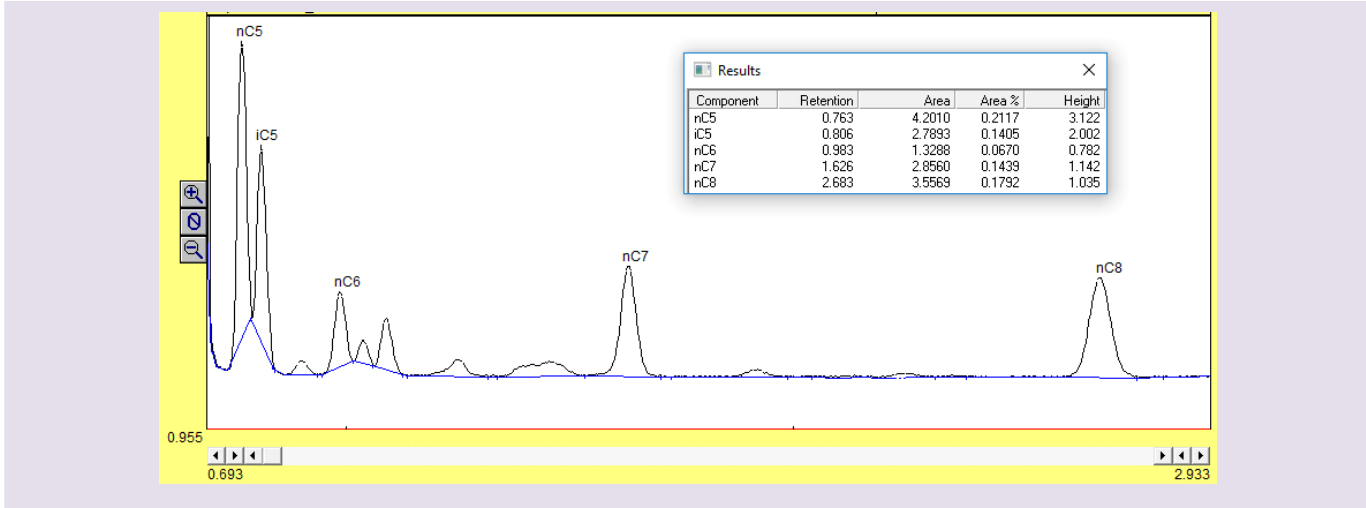
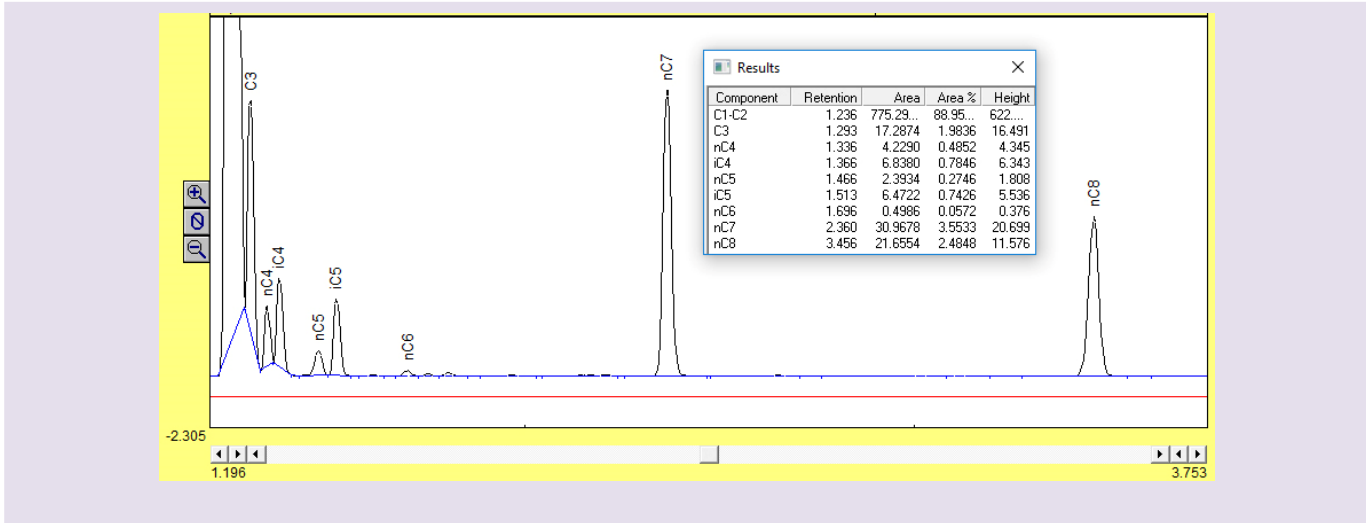
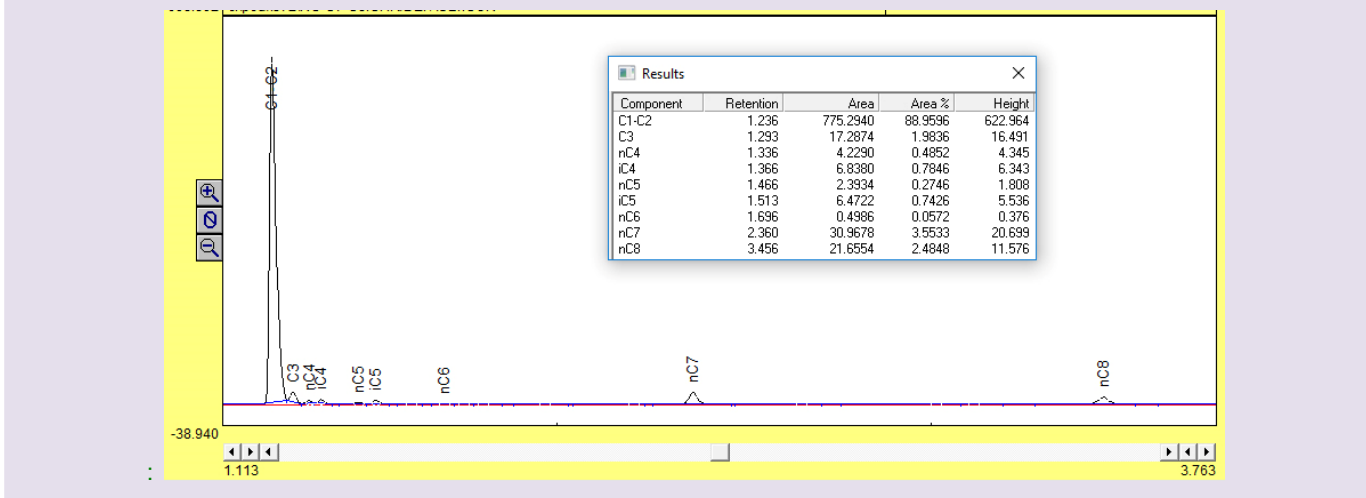
طیف گستر فراز

طراحی و ساخت گاز کروماتوگراف
تماس: ۴۴۳۶۶۷۲

GC-2560 ML

TGF

Mud logging GC can be use to analyses C1 to C8 hydrocarbons by adjusting it mode form C1-C5 to C1-C8 easily without temperature programming



www.IrangGC.com