

TGF

Gas Chromatograph (GC)

The GPT-2560 is the one of best choice of gas chromatography for training; single task professional and research purpose that provides superior performance for easy chromatography analyses application. The major advantage sealed oven and easy operation and cheap price make it best choice



New

Compact and portable

Plug & Play easy installation and operation

GPT – 2560

Performance

High speed High resolution, High reproducibility, High quality and High sensitive TCD detector

Low dead volume inlet – for packed column

Accurate and high performance isothermal oven (up to 400 °C)

Full EPC high resolution gas control

User friendly software

Dimension: 27-38.5-26.6 cm (X-Y-Z)

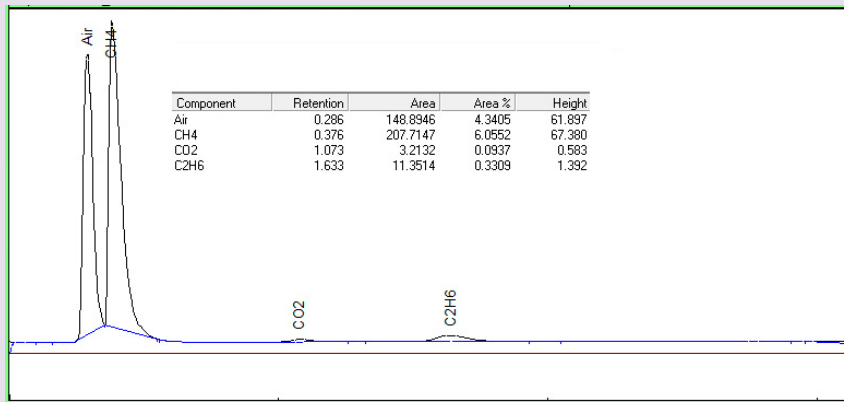
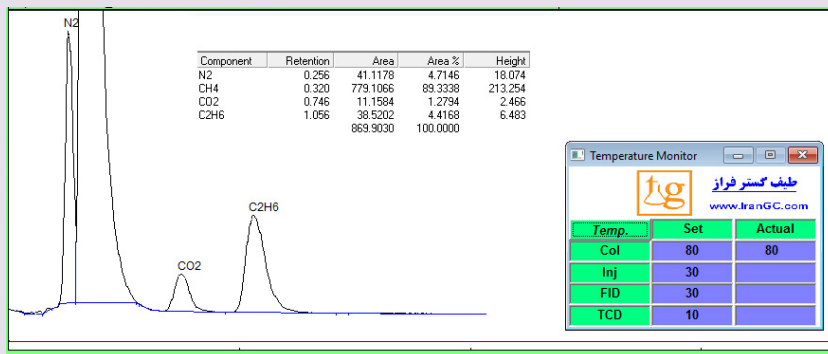
Weight: 14.5 ~ 15.5 Kg

Application

Research & Development

Training

Single task professional



About GPT-2560

GP series are compact and portable gas chromatography that all the injector, column oven and detector is assembled in compact module for easy operation and cheap GC for training or single task professional purpose for university student or research or quality control in industrial laboratories.

GPT-2560 is portable GC equipped with 4 filament high sensitive and low noise TCD GPT-2560 analytical module has pre installed packed column normally 6 feet 1/8 inch ID steel column packed with Porapack Q, N , Molecular Sieve 5A, SE-30 or customer order column. GPT-2560 is really plug and play GC and it need only carrier gas and a lap top and is very easy operation instrument and has user friendly software.

Other alternative GP series is GPF series that equipped with FID.

Unit 4, No. 183, Mahtab Bldg., Tolid Garan Blvd.(Ismail Abad), KM 19 Jade Ghadim Karaj, Tehran 3114859018, Iran
Tel: 0098 21 44336672 – 46825584 Fax: 0098 21 46825835 E mail: info@irangc.com – Telegram: @irangc95

www.IranGC.com

Chromatography software

Designed very user friendly and schematically, it control all GC modules and do data acquisition of all temperature, gas parameter and chromatography data.

The software does all data processing and calculation that will be needed for professional calibration and determination of chromatography analyses and result.

GPT – 2560 Specification

Parameter	Range	Comment
Oven Temperature	Ambient ~ 400 ° C	Isothermal Dual PID control
Inj – Det Temperature	Ambient ~ 400 ° C	Compact Dual PID control
Injector	Packed	1 Port
Injection mode	Manual - Online	By multi port Valve (option)
Multiple Injection	Online by 10 port valve	Back flush pre Column (Option)
Detector	TCD	4 Filament
TCD filament	4 filament	Rhenium - Tungsten
Gas control	EPC	All Chanel EPC
Power	220 V AC – 0.8 KW	No need stabilizer
Dimension	27 X 26.6 X 38.5	W X H X D
Weight	14.5 ~ 15.5	Kg depend on set up
Gross weight	15 ~ 16	Kg

WWW.IRANGC.COM

The image shows two parts of the chromatography software interface. On the left is a detailed schematic diagram of the GC system, including components like the Septum, Carrier, Split, Inj Temperature, TCD, FID, and various gas flow controls. On the right is a screenshot of the software's menu system, showing options like 'Clear', 'Open', 'Save', 'Auto Scroll', and 'Graph Source' with sub-options for 'FID', 'TCD 1', 'TCD2', and 'FFD'.